

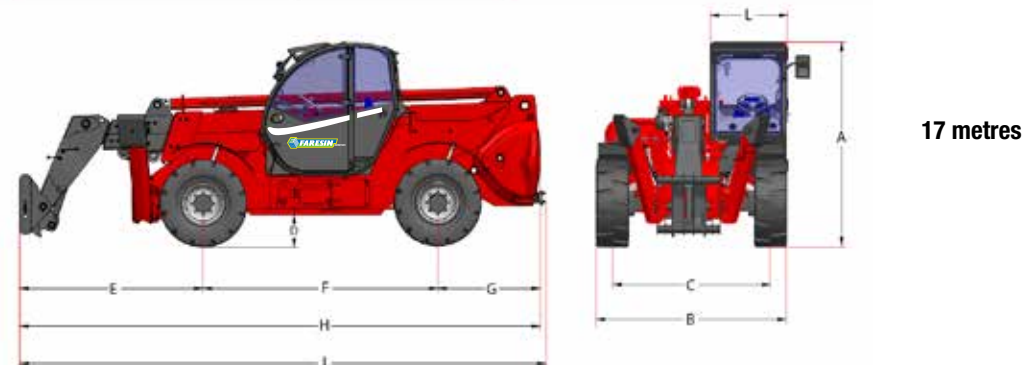
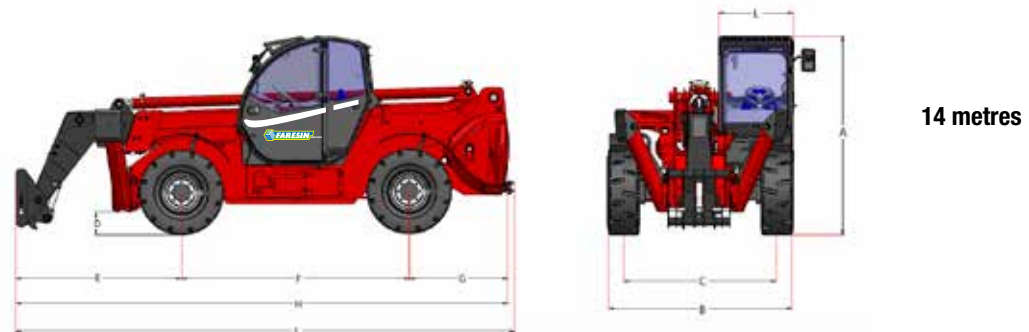
BIG RANGE | 14.35 - 14.42 - 17.30 - 17.40

Faresin's Big Range, thanks to front stabilisers and side levelling, is the ideal choice for all material handling operations in site areas. The structure of the boom built in two sections for a length of 14 metres or three sections for 17 metres is designed to ensure maximum functionality even in routine maintenance operations thanks to the external cylinder. Soundproofed King Cab with ROPS - FOPS type-approval, heating and ventilation, electro-proportional joystick.



DIMENSIONS

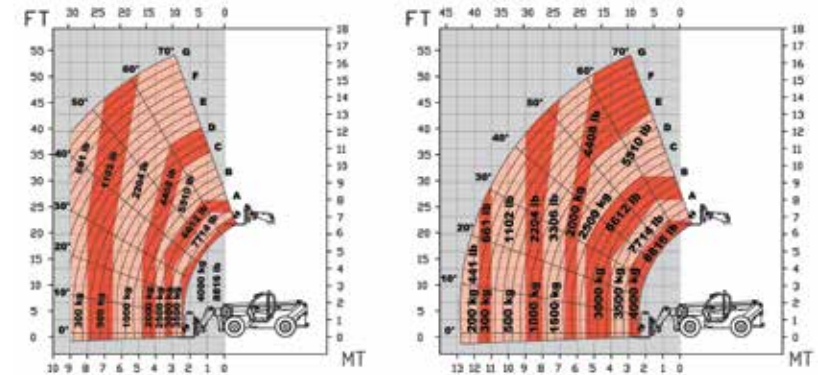
DIMENSIONS (mm)	14.35	14.42	17.30	17.40
A - Height	2500	2500	2500	2500
B - Width	2300	2300	2300	2300
C - Front track	1860	1860	1860	1860
D - Ground clearance	260	260	260	260
E - Front cantilever	2110	2110	2270	2270
F - Wheelbase	2900	2900	2900	2900
G - Rear cantilever	1270	1270	1270	1270
H - Length without tow hook	6280	6280	6440	6440
I - Length with tow hook	6350	6350	6510	6510
L - Cab width	960	960	960	960



FEATURES BY MODEL

MODELS	14.35	14.42	17.30	17.40
WEIGHT (kg)	11300	11400	11800	11900
PERFORMANCE				
No. of extending sections	2	2	3	3
Maximum capacity (kg)	3500	4200	3000	4000
Maximum lift capacity (m)	13.5	13.5	16.5	16.5
Maximum horizontal reach (m)	7	7	7.3	7.3
Reach at maximum height (m)	1.8	1.8	2.4	2.4
Fork tilt angle (°)	140	140	140	140
Towing force (daN)	6000	6000	6000	6000
TRANSMISSION	Hydrostatic transmission with mechanical gearbox		Hydrostatic transmission with mechanical gearbox	
ENGINE	DEUTZ	DEUTZ	DEUTZ	DEUTZ
Maximum power (kW/HP)	75/102	75/102	75/102	75/102
Stage	III A	III A	III A	III A
Displacement (cm³)	4100	4100	4100	4100
Exhaust gas post-treatment system	-	-	-	-
HYDRAULIC SYSTEM				
Maximum flow (l/min)	110	110	110	110
Maximum operating pressure (bar)	230	230	230	230
SPEED				
Max speed (km/h)	32	32	32	32
TYRES				
Standard	405/70-20"	405/70-20"	405/70-20"	405/70-20"
Optional	405/70-24"	405/70-24"	405/70-24"	405/70-24"
TANK CAPACITY				
Hydraulic oil tank (l)	100	100	100	100
Diesel tank (l)	140	140	140	140
FRONT CARRIAGE TYPE	FH	FH	FH	FH

LOAD DIAGRAM 14.35/14.42



LOAD DIAGRAM 17.30/17.40

