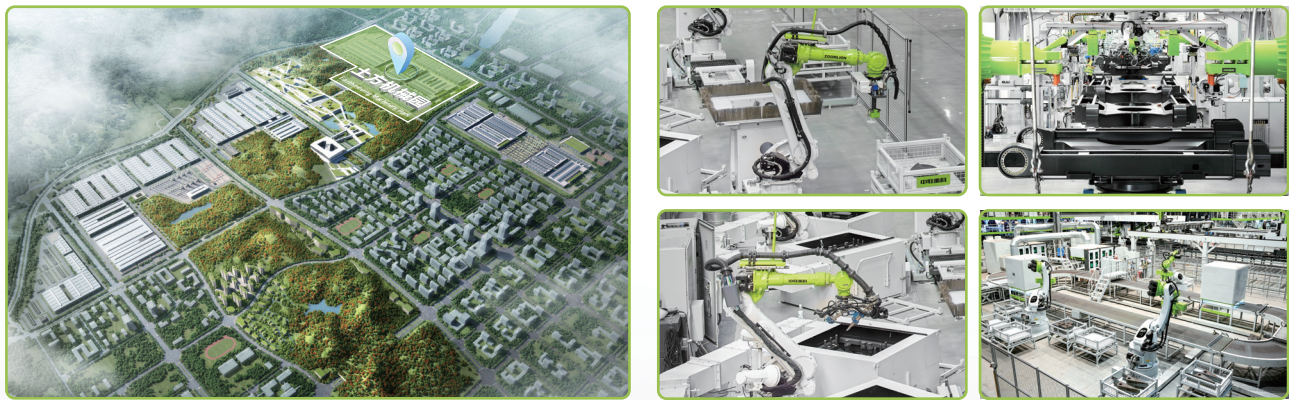


ZOOMLION TECHNOLOGY WITH INGENUITY AND CARE



THE WORLD'S LEADING EXCAVATOR INTELLIGENT MANUFACTURING FACTORY
ZOOMLION Smart City Earthmoving Machinery Park is an industry-leading intelligent and flexible excavator factory. From a piece of steel plate to an excavator, with high-precision welding process, highly reliable assembly process, high-level coating process and strict quality control, each excavator is delivered with ultimate quality.



Zoomlion Heavy Industry Science & Technology Co.,Ltd.
Add: No.361, South Yinpen Road, Changsha, Hunan Province, P.R.China 410013 Email: earthmoving@zoomlion.com
Copyright©2024 Zoomlion. All rights reserved. Reproduction and copying of any part of contents is not allowed for any purposes without Zoomlion's approval.
Note: Materials and specifications are subject to change without notice. Featured machines in photos may include additional equipment.



ZOOMLION 3.5-TONNAGE CRAWLER HYDRAULIC EXCAVATOR ZE36GU



ZOOMLION MINI-EXCAVATOR

ZE36GU

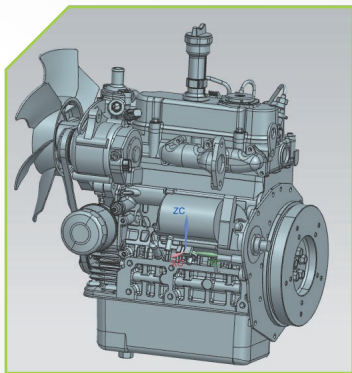
Engine power:
18.2 kW@2200 rpm

Operating weight:
3690 kg (Canopy)
3790 kg (Cab)

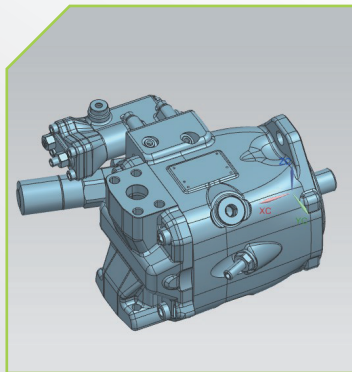
Bucket capacity:
0.1 m³



ZOOMLION MINI-EXCAVATOR



INDUSTRY LEADING ENGINE
Famous brand engine with three-vortice combustion system (E-TVCS); Mechanical speed regulation; High power, sufficient power reserve, fuel saving.



THE NEW-GENERATION OF ZOOMLION MAIN PUMP
The 45cc large-displacement main pump is combined with the large-torque, high-power reserve engine to achieve low fuel consumption and high work efficiency



VERSATILE ZE36GU
Versatile ZE36GU has powerful performance and features, which can easily meet customer needs. A high configuration model is equipped with a breaker plumbing, a quick coupler plumbing, and multiple attachment plumbings, and allows the user to control the plumbing with a switch on the joystick for easier operation.

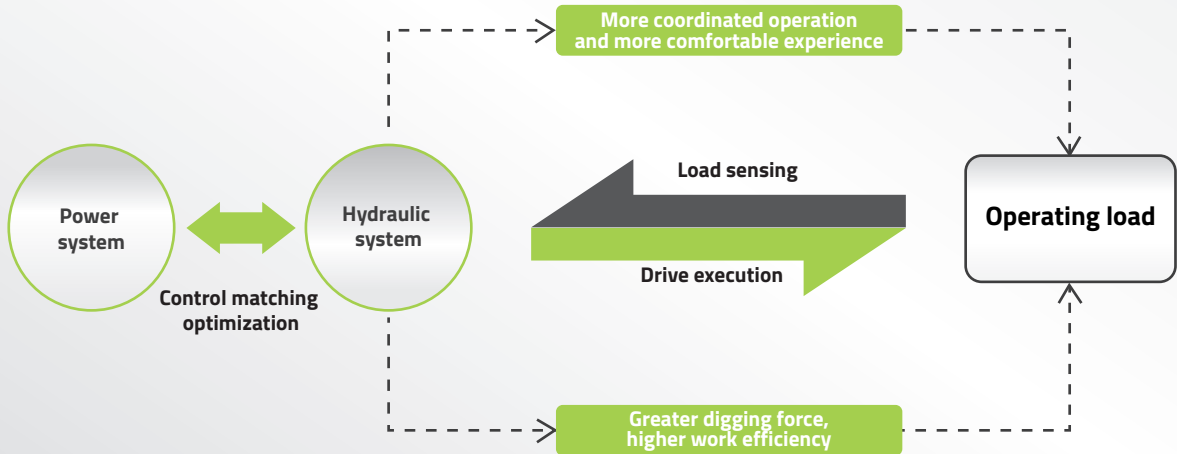


ZERO-TAIL SWING

One of ZE36GU's highlights is zero tail swing, its radius of swing will not exceed the width of the track in the full expanded state. This design means that it can work in narrow spaces and on busy roads, not limited by space.

LOAD SENSING SYSTEM

It can provide and distribute the flow according to the needs of the system, which meets the requirements of the actuator speed regulation and compound action, where the work efficiency is higher than that of the three-pump throttling system.



CONSIDERATE DESIGN

A step tread is installed for driver to easily get in the cab.



LARGE SPACE DESIGN

It enjoys spacious legroom, where operating will not be limited by space. The entrance also features large size for drivers to easily get inside and outside. The room is not mini in this mini-excavator.



FATIGUE-REDUCING DESIGN

The armrest adopts stepless adjustment design. You can adjust the height as you wish. All drivers' needs will be satisfied.



CONTROL PANEL

The LCD instrument panel provides key control. The user-friendly operation panel is not only full of technology, but also retains the physical key touch feeling. The menu bar on the right allows you to view key information such as engine speed, coolant temperature, and fuel level.



BABY-CARING LEVEL AIR CONDITIONER

The machine is equipped with ZOOMLION self-developed new air conditioning system, with heating and cooling air conditioning functions and internal and external circulation system, providing adequate air volume for better comfort.



MULTIFUNCTIONAL JOYSTICK FOR A HIGH-CONFIGURATION MACHINE

The Multifunctional joystick of a high configuration machine can better assist customers in controlling various attachments to complete various tasks.



1. Battery voltage	2. Working hours
3. Hydraulic oil temperature	4. Fuel level
5. Fault warning	6. Light
7. High and low speed switching	8. Menu bar
9. Operation menu	10. Alarm

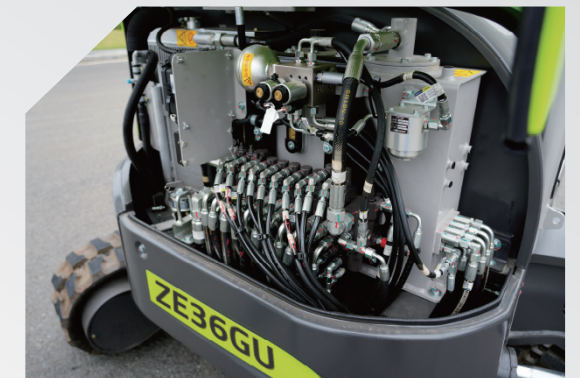


HIGH RELIABILITY

The working plumbing is close to the upper part of the boom to avoid bumping into the plumbing during operation. Our design philosophy is to ensure equipment safety and build trust with customers.



The dozer plumbing is equipped with a protective plate to cope with difficult working conditions, protecting the cylinder and line at the same time.



OPEN INSPECTION

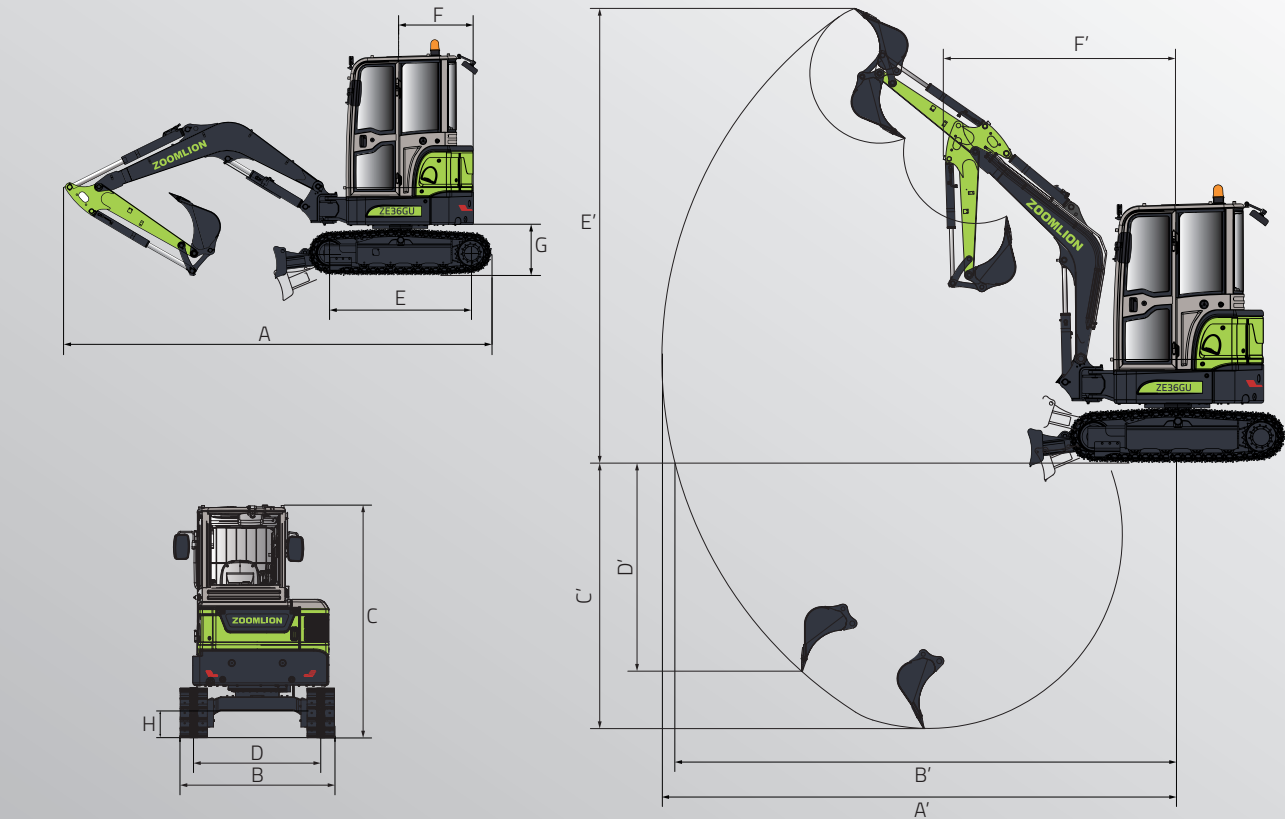
By opening the side door on one side, you can easily check the cooler, hydraulic oil, safety switch and other projects.



ONE-STOP MAINTENANCE

To open the whole tail covering piece, you only need to gently press the lock and rotate the buckle. All maintenance parts are within reach, where maintenance space is large, and the maintenance method is simple. It greatly saves the maintenance time and increases the work efficiency.

ZE36GU	
DIMENSIONS	
Overall length A	4960 mm
Overall width B	1700 mm
Overall height C	2530 mm
Overall gauge D	1400 mm
Length of track on ground E	1640 mm
Tail swing radius F	850 mm
Counterweight ground clearance G	568 mm
Minimum ground clearance H	285 mm
PERFORMANCE PARAMETERS	
Operating weight	3790 kg(Cab)/ 3690 kg(Canopy)
Standard bucket capacity	0.1 m³
Rated power	18.2 kW@2200 rpm
Travel speed (high/low)	4.2/2.3 km/h
Swing speed	9 rpm
WORK RANGE (mm)	
Max. digging reach A'	5525 mm
Max. digging reach at ground level B'	5407 mm
Max. digging depth C'	3003 mm
Max. vertical digging depth D'	2124 mm
Max. digging height E'	4859 mm
Minimum front swing radius F'	2452 mm

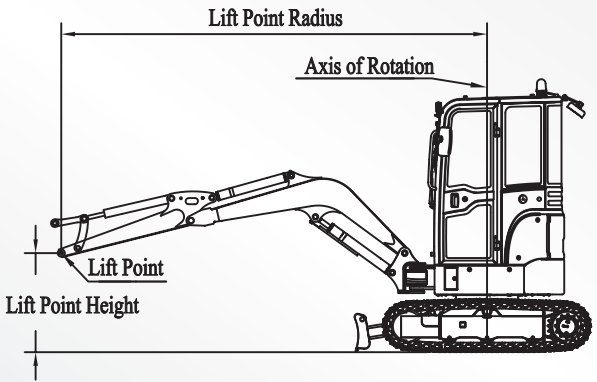


ZE36GU	
HYDRAULIC SYSTEM	
Main pump	Maximum displacement: 91 L/min
Working oil circuit	24.8 MPa
Swing oil circuit	24.8 MPa
Traveling oil circuit	21.6 MPa
Pilot oil circuit	3.5 MPa
BASIC TECHNICAL DATA	
Digging force of bucket (ISO)	31.5 kN
Digging force of arm (ISO)	19.5 kN
Max. drawbar pull	31.6 kN
Boom length	2540 mm
Arm length	1350 mm
AMOUNT OF FILLING FOR MAINTENANCE	
Fuel tank capacity	50 L
Engine coolant	5.6 L
Engine oil	5.1 L
Traveling device (each side)	0.7 L
Hydraulic system	50 L
Hydraulic tank	30 L

LIFT CAPACITY

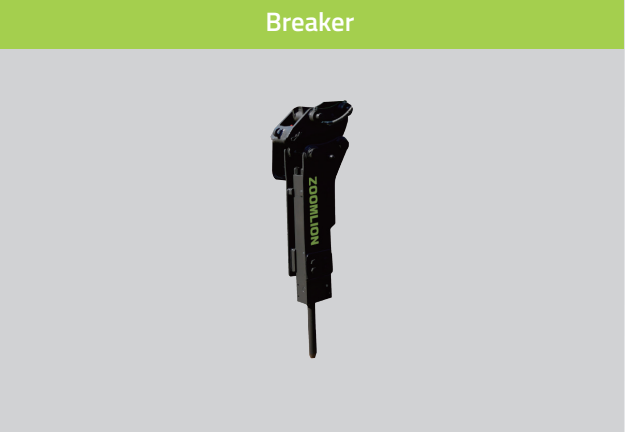
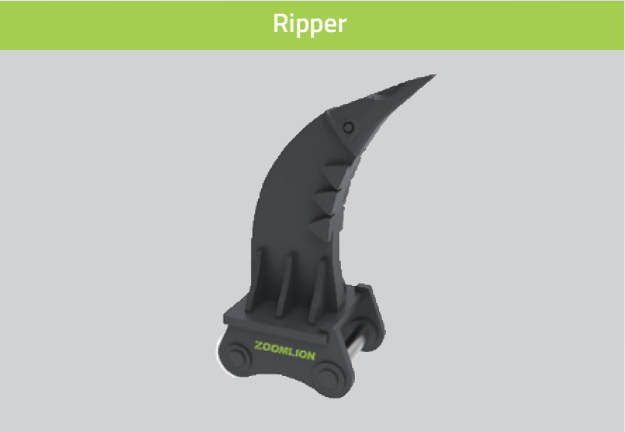
LIFT POINT HEIGHT	Lift Point Radius (2 m)		Lift Point Radius (3 m)		Lift Point Radius (4 m)		Lift Point Radius (MAX)	
	over-front (kg)	over-side (kg)	over-front (kg)	over-side (kg)	over-front (kg)	over-side (kg)	over-front (kg)	over-side (kg)
4.0 m							690*	690
3.0 m					635*	594	660*	540
2.0 m			852*	852	693*	583	668*	454
1.5 m			1037*	897	754*	573	677*	434
1.0 m			1212*	871	814*	563	689*	426
0.5 m			1332*	851	865*	553	704*	429
0 m			1386*	840	893*	547	718*	441
-1.0 m	2323*	1632	1312*	836	825*	546	742*	514

Notes:
1. Load with * is limited by hydraulic capacity and based on ISO10567. Rated loads do not exceed 87% of the hydraulic capacity.
2. Load without * is limited by tipping load and based on ISO10567. Rated loads do not exceed 75% of the tipping capacity.
3. The excavator bucket, hook, sling and other lifting accessories are not included in this table.



SYSTEM	CONFIGURATION ITEM	ZE36GU
Powertrain	Engine	● Kubota
	Emissions from engine	Euro V/T4F
	Power kW/rpm	18.2/2200
Hydraulic system	Air filter	●
	Boom explosion-proof valve	●
	Arm explosion-proof valve	●
	Breaker plumbing (one/two-way switchable)	●
	Attachment plumbing	●
	Quick coupler plumbing	●
Cab	Flow regulation attachment plumbing	●
	Canopy	○
	Cab	●
	A/C	●
	FOPS	●
	ROPS	●
	Fire extinguisher	●
	Multifunctional joystick	●
	Two-bar steel crawler	○
Lower structure	Rubber track	●
	Rubber track block	● 300 mm
	Carrier roller, single side	● Single carrier roller
	Track roller, single side	● 4
	Lower rail damp, single side	○ Single guard rail
	Bulldozer blade	●
Work equipment	Standard boom length	● 2540 mm
	Standard arm length	● 1350 mm
	Arm for thumb damp	○ 1350 mm
Bucket	Standard configuration	● 0.1 m³ reinforced bucket
	Optional part 1	○ 300 mm narrow bucket
	Optional part 2	○ 1200 mm wide flat bucket
Electrical system	Audible and visual alarm	●
	LED working lamps (front)	● 2
	LED working lamps (back)	○ 1
	Emergency stop switch	●
	12V power port	●
	Boom working lamp	● 1
	GPS	●
	AM/FM radio AM/FM	●
	Recommended breaker drill rod diameter 1	53 mm
Attachments	Straight breaker	○
	Hydraulic quick coupler	○
	Ripper	○
	Tilt soil bucket	○
	Auger (with 300mm drill bit)	○
	Auger extension rod	○ 600 mm
	Auger bit 450mm	○
	Thumb clamp	○
Others	Auxiliary counterweight	○
	Cab rearview mirror	○ 1(Canopy)/● 3(Cab)

● STANDARD
 ○ OPTIONAL



**VISION
CREATES
FUTURE**

